

# **Potential Ornamental Grasses in Hong Kong**

**Dr. Eric, YT Lee 李賢社博士**

**Honorary Senior Research Fellow**

**School of Life Sciences, CUHK**

**President**

**Hong Kong Institute of Horticultural Science**

**20 July 2013**

## The structure of a grass

### Flowering shoots and flowers

The flowering shoots have leaves, but the stem, a culm, is tall. The internodes are long and clearly seen. The flowerhead appears at the top of this stem. It is held high above the leaves so that the pollen can drift freely from flower to flower.

flowerhead

spikelet

ligule

internode

node

culm

leaf sheath

### Stems and shoots

Most grasses have hollow stems with solid joints or **nodes** at intervals. There are two kinds of shoot – leafy shoots and flowering shoots. Except for bamboos, the stems of leafy shoots are very short.

roots

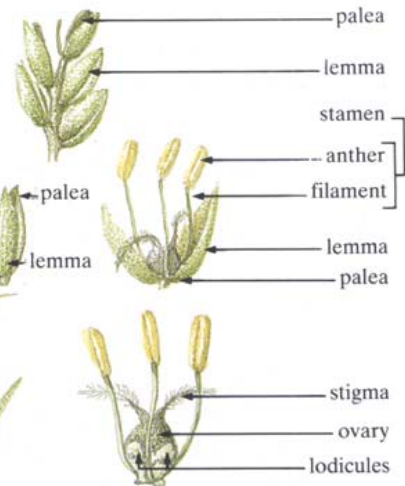
### Leaves

Each leaf is made up of two parts. The lower part is the sheath, which starts at a node and encloses the stem or **internode** immediately above it. The upper part is the **blade**, which is usually long and narrow, with parallel veins. Blades may be flat, rolled or folded and can be smooth and shiny, soft or rough, hairy or stiff.

tiller

### Roots

Grasses have a tangled mass of thin, much-branched roots and thread-like rootlets. Some, like maize, also have supporting prop roots which sprout from the stem above the ground.



# Ornamental Grass

## 觀賞草

- Becoming very popular in United States in the last few decades in term of number of new species/cultivars and in landscaping uses

過去三數十年間在美國變得很普及, 無論在品種或園藝使用上

- Big market.

很大的市場

- Many local grasses with potential ornamental value are still pending to explore.

在香港許多具觀賞草潛質, 但仍有待發掘.

# Ornamental Grass in USA

## 美國的觀賞草

### 1. Species

#### 品種

### 2. Use in the Landscape Area

#### 園藝上的應用

# Ornamental Grass Sold in Nursery – 1

## 在美國花圃出售的觀賞草 - 1







PERENNIALS ✨

# Miscanthus sinensis 'Variegatus'

*Variegated Japanese Silver Grass*

EXPOSURE  
Sun to Light Shade

HEIGHT  
6-7 Feet

FEATURES  
Pale Pink Plumes  
September to October



Popular for over 100 years. Still one of the best.

Very attractive, clump-forming ornamental with tall, vertically striped green and white blades. Provides good winter interest, especially under a little snow. Somewhat drought tolerant once established, but water well in its first year. Cut back in spring before it starts growing.

Good For Cut Flowers

PERENNIALS ✨

# Miscanthus sinensis 'Yaku Jima'

*Dwarf Maiden Grass*

EXPOSURE  
Full Sun

HEIGHT  
3-4 Feet

FEATURES  
Silvery Pinkish Plumes  
August



Not too big, not too small, just the right size.

If you like the look of M. 'Gracillimus', but want a smaller plant, this is the selection for you. Compact, narrow leaved plants form rounded mounds. Provides good winter interest, especially under a little snow. Somewhat drought tolerant once established, but water well in its first year. Cut back in spring before it starts growing.

Good For Cut Flowers

PERENNIALS ✨

# Miscanthus sinensis 'Strictus'

*Porcupine Grass*

EXPOSURE  
Full Sun

HEIGHT  
6-9 Feet

FEATURES  
Reddish Plumes  
September



This super tall maiden grass has bold, yellow-gold horizontal banding on spiky, erect blades.

Strongly upright in habit, lending a great porcupine quill effect. Excellent choice for a large border specimen. Provides good winter interest, especially under a little snow. Somewhat drought tolerant once established, but water well in its first year. Cut back in spring before it starts growing.

Good For Cut Flowers

PERENNIALS ✨

# Miscanthus sinensis 'Gracillimus'

*Maiden Grass*

EXPOSURE  
Full Sun

HEIGHT  
5-7 Feet

FEATURES  
Feathery, Reddish Plumes  
September to Winter



The top selling Miscanthus.

An ornamental grass with fine-textured foliage and slender, upright arching stalks, 'Gracillimus' has a handsome, rounded overall form. Provides good winter interest, especially under a little snow. Somewhat drought tolerant once established, but water well in its first year. Cut back in spring before it starts growing.

Good For Cut Flowers

PERENNIALS ✨

# Miscanthus sinensis 'Cabaret'

*Maiden Grass, Japanese Silver Grass*

EXPOSURE  
Full Sun

HEIGHT  
6-8 Feet

FEATURES  
Pinkish to Silvery-Tan  
Plumes September to  
October



One of the boldest of the variegated Miscanthus.

Maybe the boldest of the variegated Miscanthus. Broad, dark green edged leaves have a wide cream-white stripe in the middle. A striking large specimen grass, superb in containers or the border. Provides good winter interest, especially under a little snow. Somewhat drought tolerant once established, but water well in its first year. Cut back in spring before it starts growing.

Good For Cut Flowers

PERENNIALS ✨

# Miscanthus sinensis 'Adagio'

*Dwarf Maiden Grass*

EXPOSURE  
Full Sun

HEIGHT  
4 Feet

FEATURES  
Fluffy Pinkish Plumes  
September



Usually the first Miscanthus to start blooming in our yard.

A compact, clump-forming ornamental grass with fine-textured silver-green blades, 'Adagio' is an excellent choice for smaller gardens. Provides good winter interest, especially under a little snow. Somewhat drought tolerant once established, but water well in its first year. Cut back in spring before it starts growing.

Good For Cut Flowers





PERENNIALS ✨

## Calamagrostis Karl Foerster

*Feather Reed Grass*

EXPOSURE

**Sun to Part Shade**

HEIGHT

**3-5 Feet**

FEATURES

**Flower Stalks Appear in  
Early Summer**



This valuable grass  
will bring height to the  
garden without being  
overwhelming.

The deep green foliage  
appears in early spring and  
lasts until early winter. Loose,  
feathery flower inflorescences  
appear in June and are  
initially light pink in color. A  
very upright grass that won't  
sprawl like other tall grasses.

Good For Cut Flowers

Scan with your Smartphone for more information.



PERENNIALS ✨

## Calamagrostis Avalanche

*Feather Reed Grass*

EXPOSURE

**Sun**

HEIGHT

**4-5 feet**

FEATURES

**White Flowers July to  
October**



This valuable grass  
will bring height to the  
garden without being  
overwhelming.

The deep green and white  
foliage appears in early  
spring and lasts until early  
winter. Loose, feathery flower  
inflorescences appear in June  
and are creamy white in  
color. A very upright grass  
that won't sprawl like other  
tall grasses.

Cut Flowers, Deer Resistant,  
Salt Tolerant



US Ornamental Grass -1  
*Miscanthus sinensis* “Zebrinus” – Zebra Grass  
美國觀賞草 - 1



US Ornamental Grass - 2 :  
*Miscanthus sinensis*  
美國觀賞草 - 2



## US Ornamental Grass 3:

*Penisetum* spp.

美國觀賞草 - 3



# Other US Ornamental Grasses – 1

## 其他美國觀賞草 - 1



## Other US Ornamental Grasses – 2

### 其他美國觀賞草 - 2



## Other US Ornamental Grasses – 3

### 其他美國觀賞草 - 3



# US Ornamental Grass used in Landscape Area – 1

## 美國觀賞草用於園景設計 - 1



# US Ornamental Grass used in Landscape Area – 2

## 美國觀賞草用於園景設計 - 2



# US Ornamental Grass used in Landscape Area – 3

## 美國觀賞草用於園景設計 - 3



# US Ornamental Grass used in Landscape Area – 4

## 美國觀賞草用於園景設計 - 4



## US Ornamental Grass used in Landscape Area – 5

### 美國觀賞草用於園景設計 - 5



# Local Beauties -1

## 香港本土品種 - 1

1. 蘆竹 *Arundo donax*, Giant Reed
2. 芒 *Miscanthus* spp., Chinese Silivergrass
3. 棕葉蘆 *Thysanolaena agrostis* , Tiger Grass
4. 類蘆 *Neyraudia reynaudiana*, Reed-like Grass
5. 斑茅(大密) *Saccharum arundinaceum* , Reed-Like Sugarcane
5. 甜根兒草 *Saccharum spontaneum* Wild Cane
6. 薏苡 *Coix lacryma-jobi*, Job's Tears
7. 大黍 *Panicum maximum*, Guinea Grass
8. 狼尾草 *Pennisetum alopecuroides*, Plume Grass
9. 多穗狼尾草 *Pennisetum ploystachyon*, Mission Grass
10. 其他狼尾草 – 1, Other *Pennisetum* species - 1
11. 其他狼尾草 – 2, Other *Pennisetum* species - 1

# Local Beauties -2

## 香港本土品種 - 2

12. 象草 *Pennisetum purpureum*, Napier Grass (Elephant Grass)
13. 蘆葦 *Phragmites australis*, Common Reed
14. 卡開蘆(水竹) *Phragmatis karka*, Reed
15. 彎葉畫眉草(戀風草) *Eragrostis curvula*, Weeping Lovegrass
16. 白茅(絲茅) *Imperata koenigii*, Lalang Grass
17. 紅毛草 *Rhynchelytrum repens*, Red Top
18. 棕葉狗尾草 *Setaria palmifolia*, Palm-grass
19. 鬣刺 *Spinifex littoreus*, Littoral Sprinegrass
20. 斑葉鈍葉草 *Stenotaphrum dimidiatum* , Varigated St. Augustine Grass
21. 培地茅 *Vetiveria zizanioides*, Vertivar Grass
22. 觀賞竹 Ornamental Bamboo

蘆竹  
*Arundo donax*  
Giant Reed



蘆竹 - 2  
*Arundo donax*  
**Variegated Giant Reed**



芒

*Miscanthus* spp  
Chinese Silvergrass



芒 - 2

*Miscanthus* spp  
Chinese Silvergrass



棕葉蘆  
*Thysanolaena agrostis*  
Tiger Grass



類蘆

*Neyraudia reynaudiana*

Reed-like Grass



## 類蘆 - 2

*Neyraudia reynaudiana*

Reed-like Grass



斑茅(大密)  
*Saccharum arundinaceum* Retz  
Reed-Like Sugarcane



斑茅(大密) - 2  
*Saccharum arundinaceum* Retz  
Reed-Like Sugarcane



甜根兒草  
*Saccharum spontaneum*  
Wild Cane



薏苡

*Coix lacryma-jobi* L.

Job's Tears



大黍  
**Panicum maximum**  
**Guinea Grass**



大黍 - 2

**Panicum maximum**

**Guinea Grass**



狼尾草

*Pennisetum alopecuroides*

Plume Grass



## 狼尾草 - 2

*Pennisetum alopecuroides*

Plume Grass



多穗狼尾草  
*Pennisetum ploystachyon* (L.)Schult.  
Mission Grass



# 其他狼尾草 - 1

*Pennisetum* sp.

Other Pennisetum Grass



狼尾草

其他狼尾草 - 2  
*Pennisetum* sp.  
Other Pennisetum Grass



象草

*Pennisetum purpureum*  
Napier Grass (Elephant Grass)



蘆葦

*Phragmites australis* (Cav.) Steud.

Common Reed



卡開蘆(水竹)  
*Phragmatis karka*  
Reed



彎葉畫眉草(戀風草)

*Eragrostis curvula*

Weeping Lovegrass



白茅(絲茅)  
*Imperata koenigii*  
Lalang Grass



紅毛草

*Rhynchelytrum repens*

Red Top



棕葉狗尾草  
*Setaria palmifolia*  
Palm-grass



鬘刺

*Spinifex littoreus*

Littoral Sprinegrass



斑葉鈍葉草  
*Stenotaphrum dimidiatum*  
Variegated St. Augustine Grass



菅

*Themeda villosa*

**Themeda**

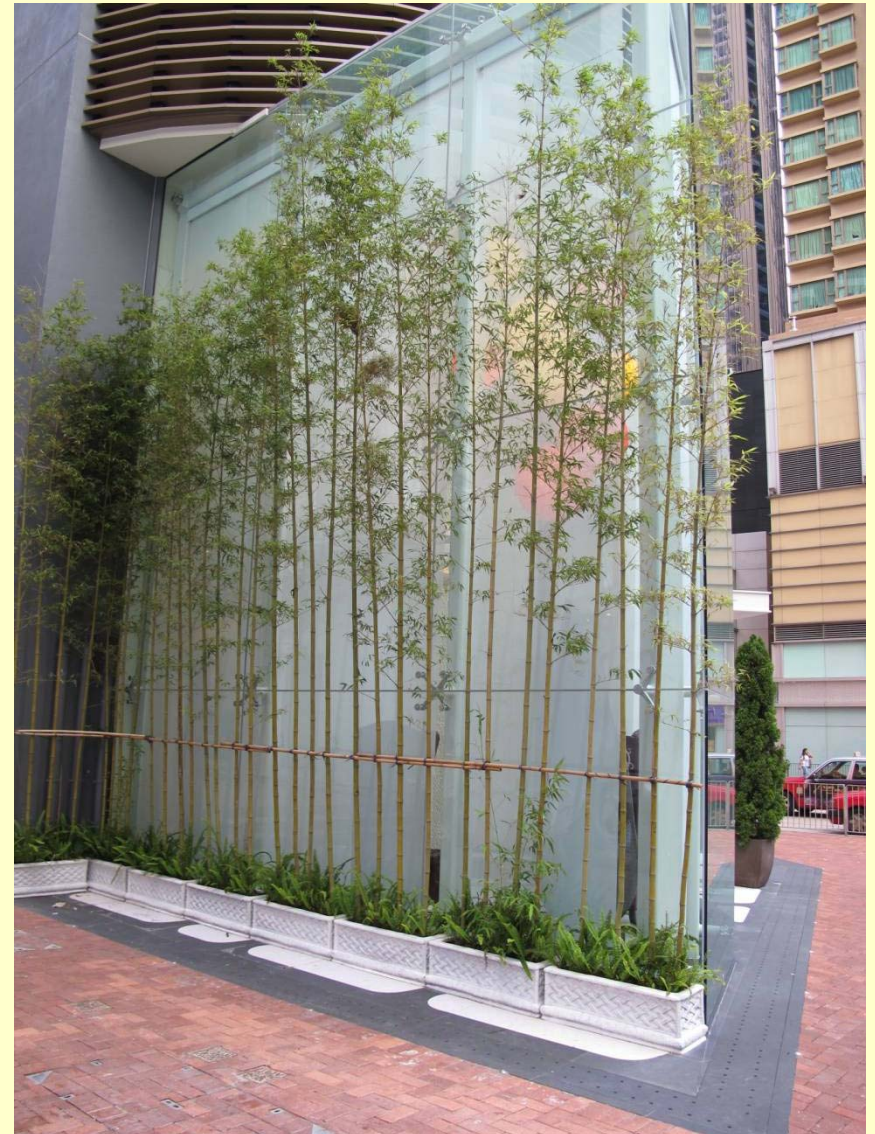


培地茅  
*Vetiveria zizanioides*  
Vertivar Grass



# Ornamental Bamboo

## 觀賞竹



謝謝

Thank You!